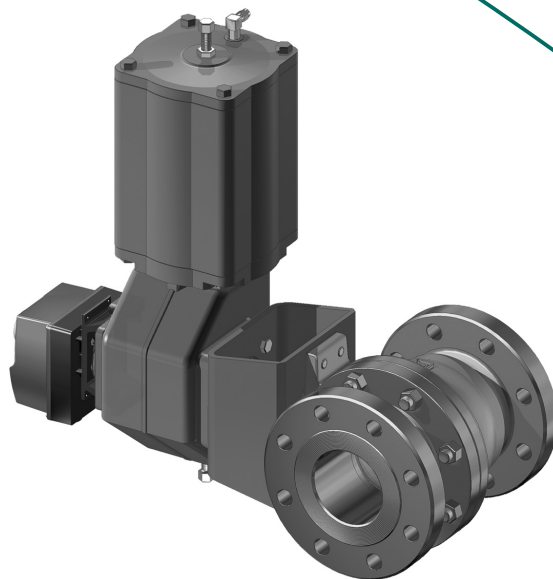


NELES® FLANGED FULL BORE MBV BALL VALVE, SERIES M2 FOR ASME RATINGS

Metso's Neles modular ball valve series M2, offers optimized performance of pulp and paper applications. Series M, incorporates Metso's leading pulp and paper application know-how in valve technology. Several decade experience of Metso has fine tuned this product to deliver P&P customers easy product selection with industry leading performance. Valve series includes seat supported and trunnion mounted ball valve designs covering seat types, size ranges and material options offering comprehensive coverage for most pulp and paper applications needs. Valve delivers excellent tightness for shutoff as well as delivering good control performance for pulp and paper applications. Optimized modularity can be used as an advantage to cut down costs via reduced spare part inventory and product suitability for wide scope of process applications.



Applications

- Pulp & paper
- Digesters and fiberlines
- Liquor service
- Chemical recovery
- Sludge treatment
- TMP-plants
- Deinking and recycling plants
- Steam
- Paper mill applications

DESIGN FEATURES

Size range

- 1" ... 16".

Pressure classes

- ASME 150 and 300.

Tightness

- Separate ball and shaft assure good tightness, even with metal seats and low shut-off pressures.
- Bubble tight shut-off with soft seats.

Versions, details

- V-ring gland packing ensures long maintenance-free operation.
- Spiral wound body joint gasket for leak free operation.
- Live loaded packing as standard option for trunnion mounted valves.
- Q-trim option for reduced noise and cavitation.
- Scraping seat as standard, can be locked.
- Splined ball/shaft connection for good torque transmission.
- Trunnion design in 10" - 16".
- ATEX

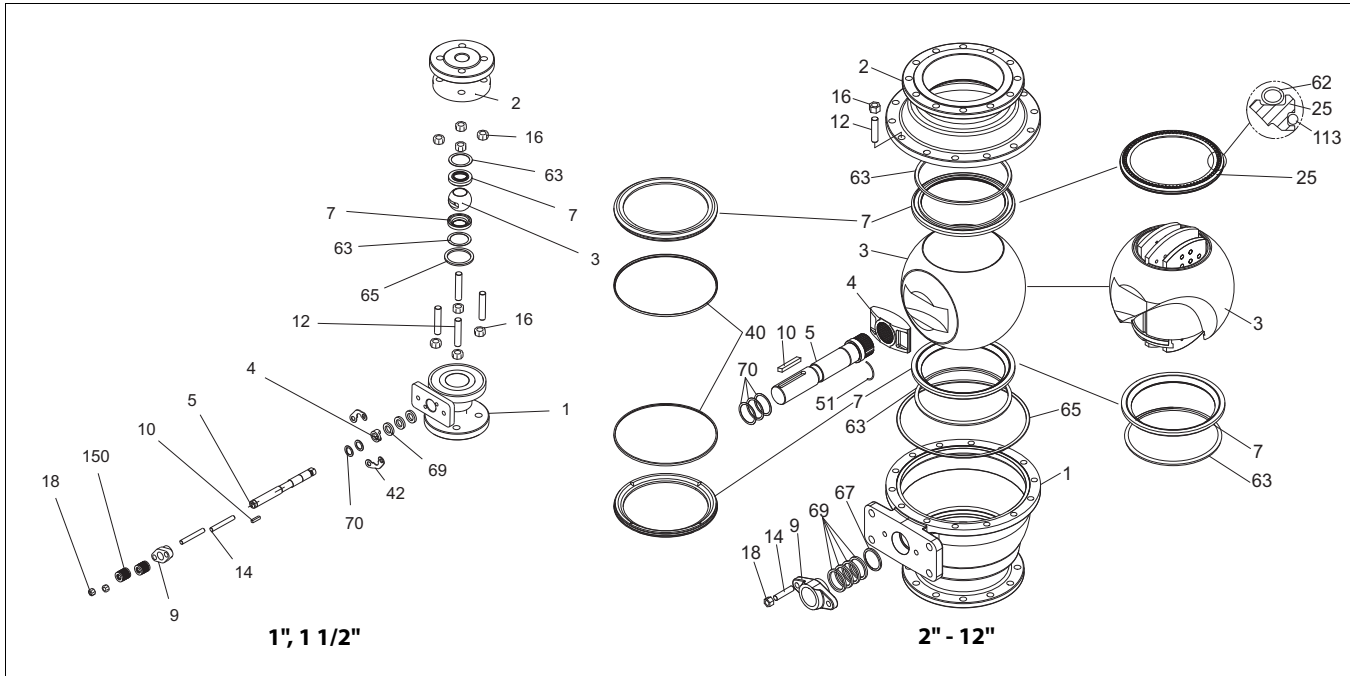
Full bore

- High C_v per nominal size.
- Straight ball opening offers low flow resistance.
- True full bore ball (cylindrical flow path).

Minimized emissions

- Uninterrupted circular spiral wound body gasket.
- No bending forces to gland packing.
- Live loaded gland packing available for seat supported valves.

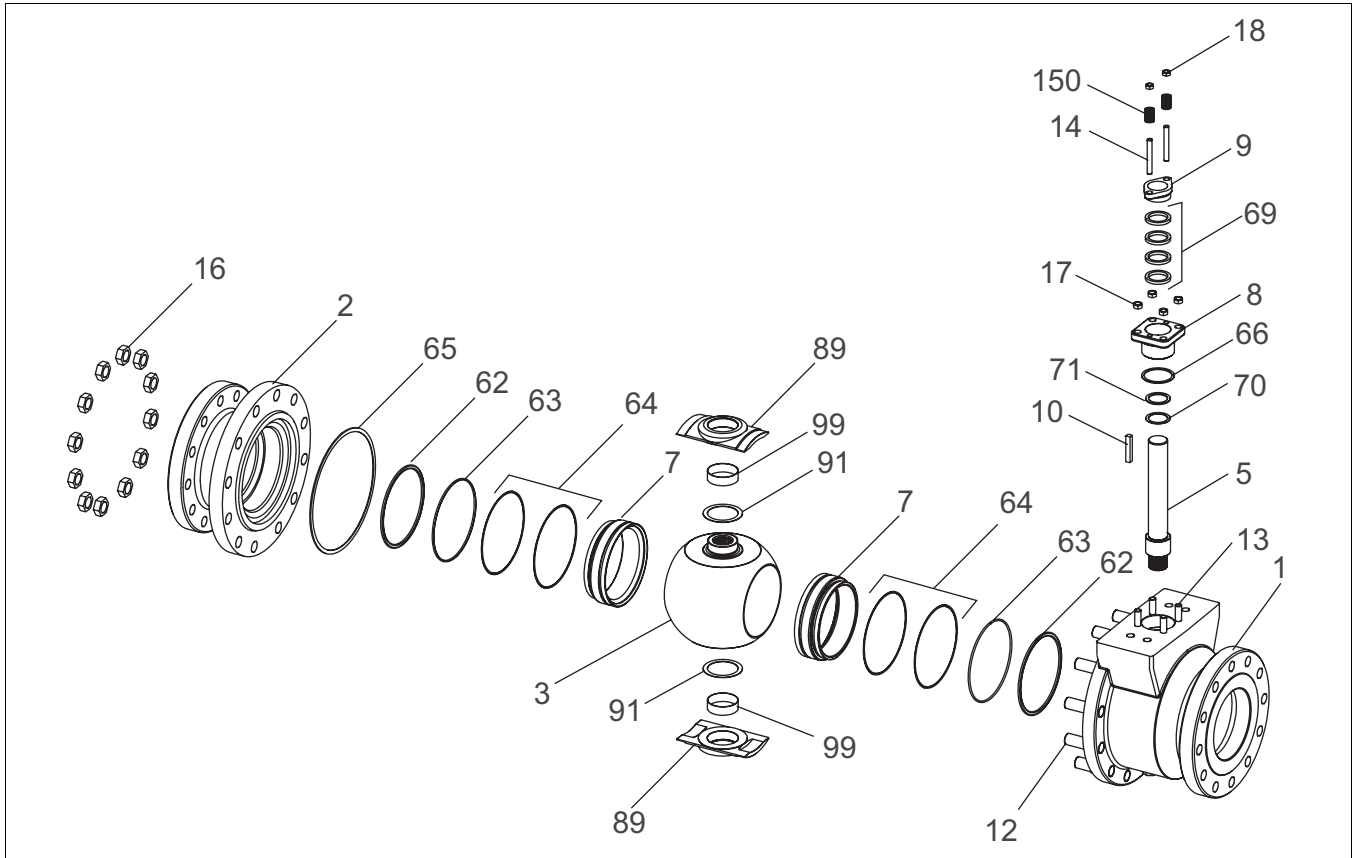
EXPLODED VIEW, SEAT SUPPORTED VALVES



PARTS LIST

Item	Part description	Material		
1	Body	Stainless steel CF8M / CG8M		
2	Body cap	Stainless steel CF8M / CG8M		
3	Ball / Q-Trim ball	Stainless steel AISI 316/CF8M / CG8M		
4	Spline driver 2" - 12" Thrust ring 1" - 1 1/2"	Stainless steel CF8M AISI 316		
5	Stem	Stainless steel AISI 329		
7	Seat	Stainless steel + cobalt based alloy	PTFE	Xtreme®
9	Gland	Stainless steel CF8M		
10	Key	Stainless steel AISI 329		
12	Stud	Stainless steel ASTM A 193 gr. B8M		
14	Stud	Stainless steel ASTM A 193 gr. B8M		
16	Hexagon nut	Stainless steel ASTM A 194 gr. 8M		
18	Hexagon nut	Stainless steel ASTM A 194 gr. 8M		
25	Seat (E)	Stainless steel + cobalt based alloy		
40	Locking ring 10" - 12"	Stainless steel AISI 316		
42	Retainer plate	Stainless steel AISI 316		
50	Cylindrical pin	Stainless steel AISI 316		
51	Retaining ring	UNS N06625		
62	Spring	UNS N06625		
63	Back seal	PTFE		
65	Body gasket	Stainless steel AISI 316 + PTFE or graphite filled spiral wound		
67	Thrust ring	Stainless steel AISI 316		
69	Packing	PTFE or graphite		
70	Thrust bearing	PTFE		
113	Back seal	FPM (O-ring) as standard, PTFE + polyester (lip seal) optional		
150	Disc spring set	Electroless nickel plated spring steel (EN 10083 - 1.8159)		

EXPLODED VIEW, TRUNNION MOUNTED VALVES



PARTS LIST

Item	Part description	Material		
1	Body	Stainless steel CF8M / CG8M		
2	Body cap	Stainless steel CF8M / CG8M		
3	Ball	Stainless steel AISI 316/CF8M / CG8M		
5	Shaft	Stainless steel XM-19 / AISI 329		
7	Seat	Stainless steel + cobalt based alloy	PTFE	Xtreme®
8	Bonnet	Stainless steel CF8M		
9	Gland	Stainless steel CF8M		
10	Key	Stainless steel AISI 329		
12	Stud	Stainless steel ASTM A 193 B8M		
13	Stud	Stainless steel ASTM A 193 B8M		
14	Stud	Stainless steel ASTM A 193 B8M		
16	Hexagon nut	Stainless steel ASTM A 194 8M		
17	Hexagon nut	Stainless steel ASTM A 194 8M		
18	Hexagon nut	Stainless steel ASTM A 194 8M		
62	Seat spring	Alloy 625		
63	Back seal	PTFE or graphite		
64	Back-up ring	PTFE		
65	Body gasket	Stainless steel AISI 316 + PTFE or graphite, filled spiral wound		
66	Bonnet gasket	PTFE or graphite		
69	Packing ring	PTFE or graphite		
70	Thrust bearing	PTFE or cobalt based alloy		
71	Thrust bearing	Cobalt based alloy		
89	Trunnion plate	Stainless steel, ASTM A 351 gr. CF8M		
91	Bearing spacer	PTFE + Stainless steel		
99	Trunnion bearing	PTFE + Stainless steel		
150	Disc spring set	Electroless nickel plated spring steel (EN 10083-1.8159)		

TECHNICAL SPECIFICATION

Product type

Flanged full bore, ball valve.
Split body design
Seat supported design 1"-12".
Trunnion design 10" - 16".

Pressure ratings

ASME 150 & 300.

Size range

1" - 16".

Temperature range

-50 °C ... +260 °C. Depending on the seat material.
-60 °F ... +480 °F.

Design standards

Valve body ASME B16.34
Valve flanges ASME B16.5
Face-to-face 1" - 6" ASME 150 / 300 and
8" - 12" ASME 150: ASME B16.10 long
8" - 12" ASME 300: ASME B16.10 short
Trunnion 10" - 16": ASME B16.10 long

Standard materials

Body CF8M.
Ball CF8M + hard chrome.
Bearings PTFE + graphite.
Seats Stainless steel + cobalt based alloy, Xtreme
Optional PTFE or filled PTFE.
Seals/gaskets PTFE, graphite, FPM.
Body gasket Spiral wound with PTFE or graphite filler.
Gland packing PTFE (V-rings), graphite.

Bolting

ASTM A 193 gr. B8M.

Certification

EN 10204 - 3.1 material certificates for body and body cap / bonnet.

Standard options

Degreasing.
Anti-static. (ATEX)
Q-Trim.
Live loaded construction for trunnion mounted valves.

Valve testing

Each valve is tested for body integrity and seat tightness. The body test pressure is 1.5 x PN. The standard seat test pressure for metal seated valves is 1.0 x PN or 7 bar / 100 psi. The seat test pressure for soft seats is 6 bar / 90 psi. The test medium is inhibited water. Air test upon request.

Valve tightness

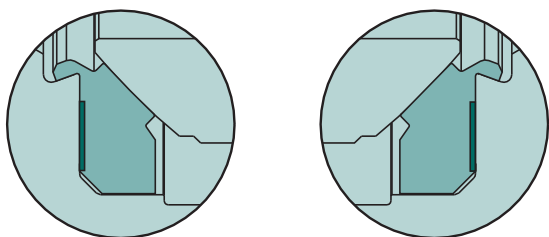
ASME / FCI 70-2 class V for metal seats as standard. Soft seated seat supported valves are bubble tight. Other tightness rates upon request.

C_v (K_v) -values and resistance coefficients

Valve size NPS	M2			M2 with Q-Trim	
	C _v 90°	K _v 90°	ξ 90°	C _v 90°	K _v 90°
1"	105	91	0.05	-	-
1 1/2"	250	220	0.07	-	-
2"	490	425	0.06	84	73
3"	1160	1000	0.05	245	210
4"	2200	1900	0.05	530	460
6"	5100	4400	0.04	1360	1180
8"	9300	8000	0.04	2330	2020
10"	15200	13200	0.04	3920	3400
12"	22400	19400	0.03	5600	4850
14"	30500	26400	0.03	6860	5930
16"	39800	34500	0.03	9190	7950

STANDARD SEAT OPTIONS

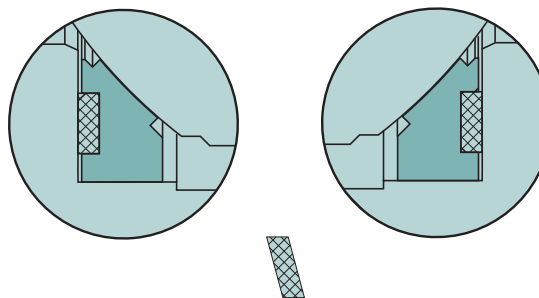
Locked scraping seat P



Non-compressed form of the PTFE back seal.

Materials:
Seats Stainless steel + cobalt based alloy
Seals PTFE
Temperature range -50 °C ... +260 °C
-60 °F ... +480 °F
Size range 1" - 12"

General scraping seat S

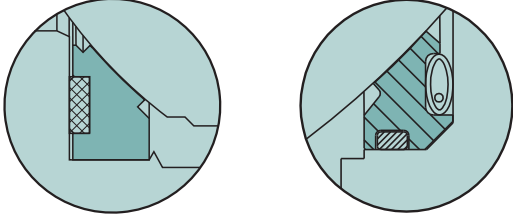


Non-compressed form of the PTFE back seal.

Materials:
Seats Stainless steel + cobalt based alloy
Seals PTFE
Temperature range -50 °C ... +230 °C
-60 °F ... +445 °F
Size range 1" - 12"

STANDARD SEAT OPTIONS

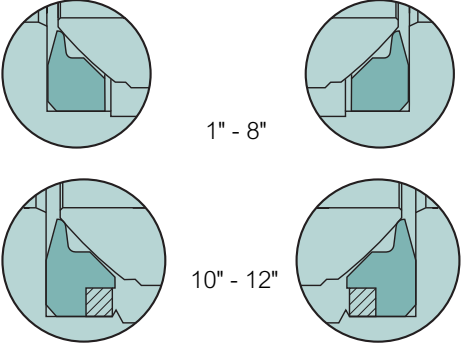
Scraping seat E for low Δp-applications



← PREFERRED TIGHTNESS DIRECTION

Material:	
Seats	Stainless steel + cobalt based alloy
Locked seals	PTFE
Spring assisted seals	FPM
Springs	UNS N06625
Temperature range	-30 °C ... +200 °C
	-22 °F ... +390 °F
Maximum Δp	16 bar / 230 psi.
Size range	1" - 12"

Soft seat M, for general use

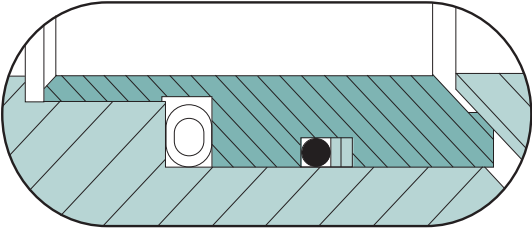


	1" - 8"
	10" - 12"

Temperature ranges:	
Xtreme (X)	-50 °C ... +260 °C / -60 °F ... +500 °F, 1" - 8"
PTFE (T)	-50 °C ... +200 °C / -60 °F ... +390 °F, 10" - 12"
Reinforced with carbon (M)	-50 °C ... +250 °C / -60 °F ... +480 °F, 10" - 12"

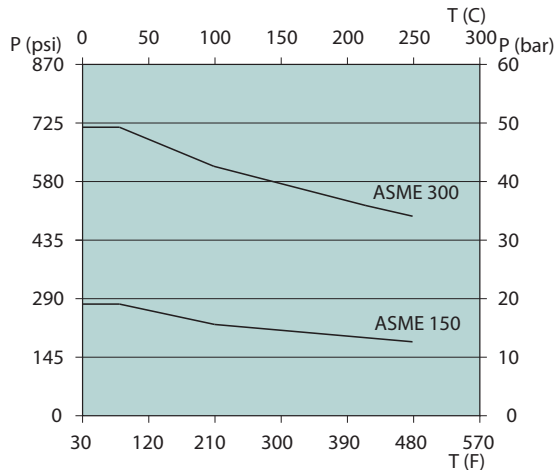
S seat for trunnion mounted valves

Metal seat



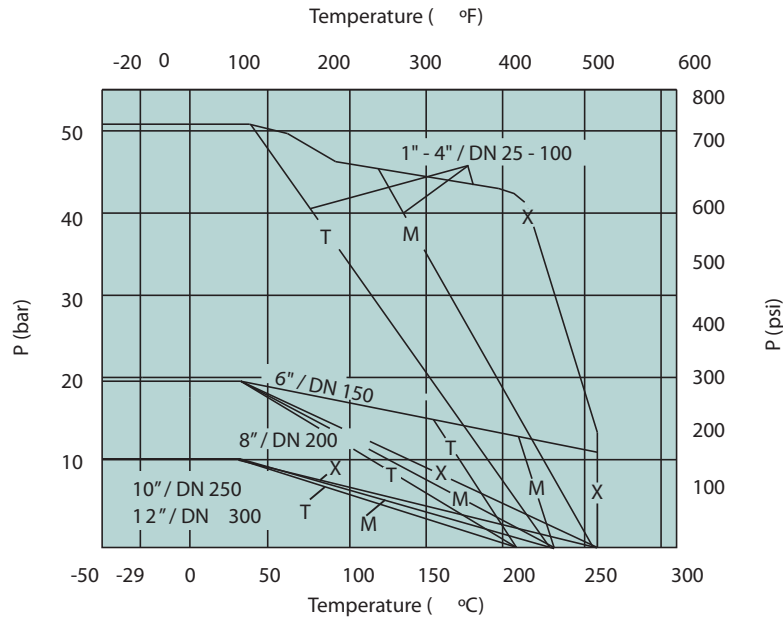
Materials:	
Ball seats	SS steel + cobalt based alloy
Seat seals	Viton GF O-ring
Spring:	INCONEL 625
Temperature range	-30 °C ... +200 °C
	-22 °F ... +390 °F

VALVE BODY RATINGS CF8M and CG8M Pressure/temperature curves of valve body ASME 150 & 300

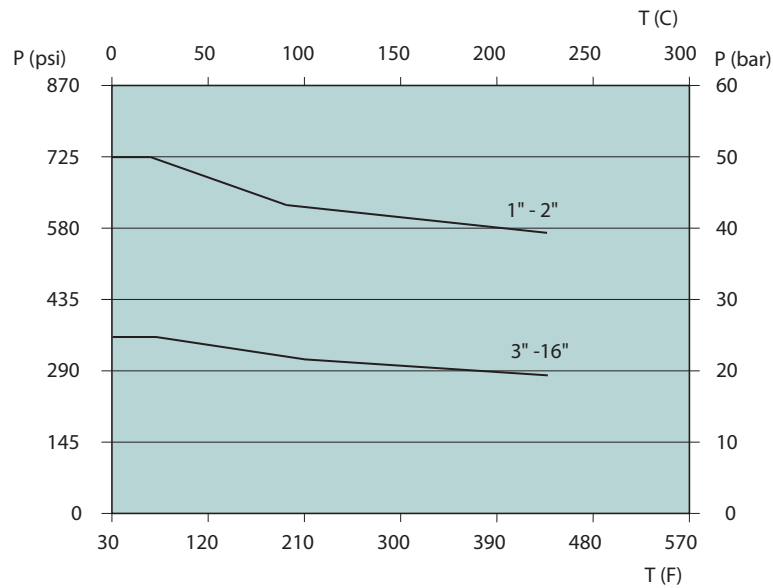


STANDARD SEAT OPTIONS

Seat supported valve, maximum operating pressure for soft seats



Maximum operating pressure for metal seats



ACTUATOR SELECTION

Soft seat ratings are based on differential pressure with the valve ball in the fully closed position and refers only the seats.

M2-valve can be equipped with the following Metso actuator types:

B1C/B1J Pneumatic double acting or spring return actuator. Actuators available for size range 1" - 16".

M M-series manual gear operator for valve sizes 1" - 16".

LK Hand lever for valve sizes 1" - 4".

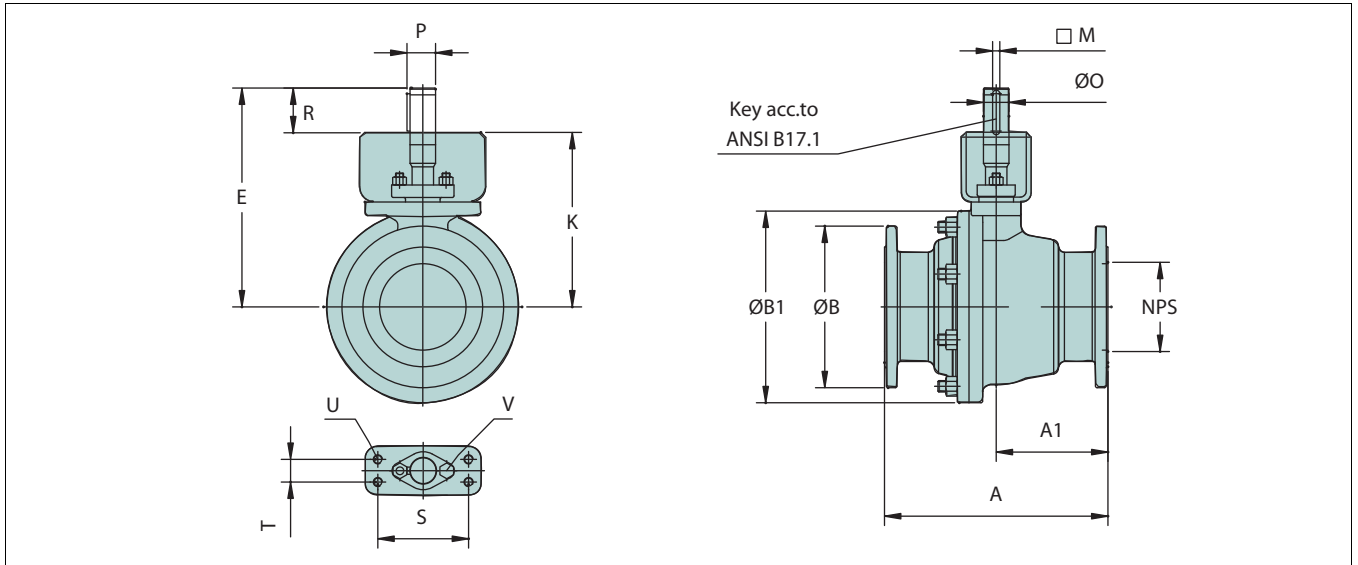
When selecting other than Metso actuators please contact your local Metso representative.

For the correct actuator selection you need to know the following process data:

- valve size and seat type
- supply pressure for the actuator
- maximum operating differential pressure over the valve in closed position

For pneumatic actuator selection use Metso Nelprof(R) Control and On-Off sizing and selection software. You can get a copy from you local sales office.

DIMENSIONS



SEAT SUPPORTED VALVES

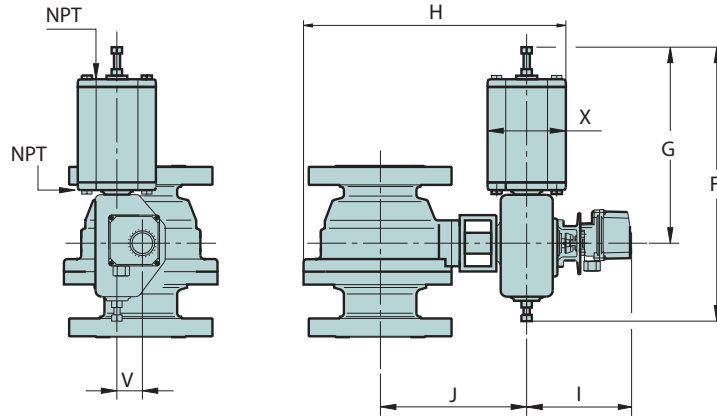
TYPE Class	NPS	DIMENSIONS (mm)													WEIGHT (kg)		
		A	A1	ØB	ØB1	E	K	M	ØO	P	R	S	T	U	V	M2	Q-M2
M2C Class 150	1	165	74	124	110	178	150	4.76	Ø 15	17	28	70	-	M10	M8	5	-
	1 1/2	165	70	155	145	206	168	4.76	Ø 20	22	38	70	-	M10	M8	8	-
	2	178	79.0	152.4	146	215	168	6.35	Ø 25	27.8	47	110	32	M12	3/8	11	12
	3	203	101.5	190.5	190	237	190	6.35	Ø 25	27.8	47	110	32	M12	3/8	25	27
	4	229	110.5	228.6	241	309	250	9.52	Ø 35	39.1	59	130	32	M12	3/8	40	43
	6	394	197.0	279.5	342	386	305	12.70	Ø 45	50.4	81	160	40	M16	1/2	100	110
	8	457	228.5	342.9	430	476	385	12.70	Ø 55	60.6	91	160	55	M20	1/2	175	195
	10	533	266.5	406.4	512	582	472	15.87	Ø 65	71.9	110	230	90	M24	3/4	290	330
M2D Class 300	1	165	74.0	124.0	110	178	150	4.76	Ø 15	17.0	28	70	-	M10	M8	5	-
	1 1/2	191	70.0	155.0	145	206	168	4.76	Ø 20	22.0	38	70	-	M10	M8	10	-
	2	216	89.0	165.1	146	215	168	6.35	Ø 25	27.8	47	110	32	M12	3/8	15	17
	3	282	141.0	209.6	200	237	190	6.35	Ø 25	27.8	47	110	32	M12	3/8	35	37
	4	305	152.5	254.0	254	309	250	9.52	Ø 35	39.1	59	130	32	M12	3/8	60	63
	6	403	201.5	317.5	353	386	305	12.70	Ø 45	50.4	81	160	40	M16	1/2	135	145
	8	419	209.5	381.0	462	476	385	12.70	Ø 55	60.6	91	160	55	M20	1/2	240	260
	10	457	208.0	445.5	552	582	472	15.87	Ø 65	71.9	110	230	90	M24	3/4	365	405
12	502	223.0	520.7	626	685	555	19.05	Ø 75	83.1	130	307	120	M30	3/4	545	600	

TRUNNION TYPE VALVES

TYPE PN	NPS	DIMENSIONS (mm)													WEIGHT (kg)		
		A	A1	ØB	ØB1	E	K	M	ØO	P	R	S	T	U	V	M2	Q-M2
M2CW/M2CZ Class 150	10	533	267	405	514	562	472	12.70	55	60.60	90	230	90	M24	M14	325	360
	12	610	305	485	592	605	515	12.70	55	60.60	90	230	90	M24	M14	480	530
	14	686	343	535	665	741	607	19.05	75	83.15	134	330	120	M30	M20	635	710
	16	762	381	595	750	779	633	22.23	85	94.63	146	330	120	M30	M20	840	940
M2DW/M2DZ Class 300	10	568	284	445	580	562	472	12.70	55	60.60	90	230	90	M24	M14	330	370
	12	648	324	520	652	605	515	12.70	55	60.60	90	230	90	M24	M14	610	660
	14	762	381	585	700	741	607	19.05	75	83.15	134	330	120	M30	M20	800	870
	16	838	419	650	799	779	633	22.23	85	94.63	146	330	120	M30	M20	1015	1100

DIMENSIONS

2" - 16" WITH B1- ACTUATOR



SEAT SUPPORTED VALVE + DOUBLE ACTING ACTUATOR, TYPE B1C

NPS	TYPE	ACTUATOR / MOUNTING	DIMENSIONS, mm							NPT/ISO	WEIGHT [kg]
			F	G	H	I	J	V	X		
2	M2C	B1C6 / F07	400	260	380	224	226	36	90	1/4	20
3		B1C9 / F07	455	315	420	225	249	43	110	1/4	35
4		B1C11 / F10	540	375	515	233	315	51	135	3/8	60
6		B1C17 / F14	770	545	680	270	401	78	215	1/2	160
8		B1C20 / F14	840	575	840	291	500	97	215	1/2	250
8		B1C25 / F16	1040	710	900	310	523	121	265	1/2	310
10		B1C25 / F16	1040	710	1000	310	610	121	265	1/2	435
10		B1C32 / F25	1330	910	1105	348	647	153	395	3/4	560
12		B1C32 / F25	1330	910	1225	348	730	153	395	3/4	740
12		B1C40 / F30	1660	1150	1330	368	780	194	505	3/4	940
1	M2D	B1C6 / F07	400	260	305	224	163	36	90	1/4	15
1.5		B1C6 / F07	400	260	345	224	183	36	90	1/4	20
2		B1C9 / F07	455	315	385	225	227	43	110	1/4	30
3		B1C9 / F07	455	315	430	225	249	43	110	1/4	45
3		B1C11 / F10	540	375	440	233	255	51	135	3/8	55
4		B1C13 / F12	635	445	555	253	331	65	175	3/8	95
6		B1C20 / F14	840	575	720	291	420	97	215	1/2	215
8		B1C25 / F16	1040	710	915	310	523	121	265	1/2	375
10		B1C32 / F25	1330	910	1125	348	647	153	395	3/4	640
12		B1C40 / F30	1660	1150	1350	368	780	194	505	3/4	1025

TRUNNION TYPE VALVE + DOUBLE ACTING ACTUATOR B1C

NPS	TYPE	ACTUATOR / MOUNTING	DIMENSIONS, mm							NPT/ISO	WEIGHT (kg)
			F	G	H	I	J	V	X		
10	M2CW/M2CZ	B1C25 / F16	1040	710	1000	310	610	121	265	1/2	430
12		B1C25 / F16	1040	710	1110	310	650	121	265	1/2	580
12		B1C32 / F25	1330	910	1210	348	690	153	395	3/4	700
14		B1C32 / F25	1330	910	1380	348	780	153	395	3/4	890
14		B1C40 / F30	1660	1150	1485	368	830	194	505	3/4	1090
16		B1C32 / F25	1330	910	1430	348	810	153	395	3/4	1100
16	B1C40 / F30	1660	1150	1535	368	860	194	505	3/4	1300	
10	M2DW/M2DZ	B1C25 / F16	1040	710	1000	310	610	121	265	1/2	600
12		B1C25 / F16	1040	710	1125	310	650	121	265	1/2	730
12		B1C32 / F25	1330	910	1230	348	690	153	395	3/4	850
14		B1C32 / F25	1330	910	1235	348	780	153	395	3/4	1070
14		B1C40 / F30	1660	1150	1485	368	830	194	505	3/4	1270
16		B1C32 / F25	1330	910	1430	348	810	153	395	3/4	1400
16	B1C40 / F30	1660	1150	1535	368	860	194	505	3/4	1600	

SEAT SUPPORTED VALVE + SPRING RETURN ACTUATOR, TYPE B1J AND B1JA

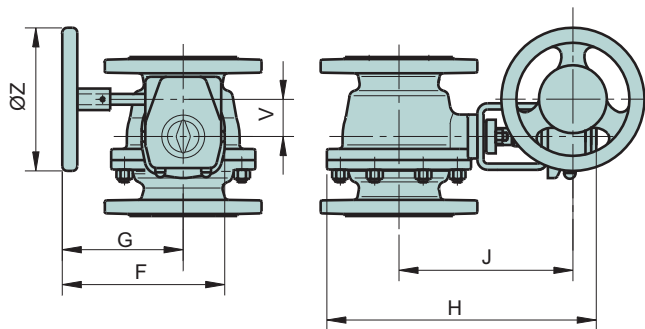
NPS	TYPE	ACTUATOR / MOUNTING	DIMENSIONS, mm							NPT/ISO	WEIGHT [kg]
			F	G	H	I	J	V	X		
2	M2C	B1J/B1JA6 / F07	485	368	360	225	227	36	110	3/8	21
2		B1J/B1JA8 / F07	560	420	380	225	227	43	135	3/8	30
3		B1J/B1JA6 / F07	485	368	400	225	249	36	110	3/8	36
3		B1J/B1JA8 / F07	560	420	420	225	249	43	135	3/8	45
3		B1J/B1JA10 / F10	650	490	440	233	255	51	175	3/8	60
4		B1J/B1JA10 / F10	650	490	525	233	315	51	175	3/8	75
4		B1J/B1JA12 / F12	800	620	560	253	331	65	215	1/2	100
6		B1J/B1JA16 / F14	990	760	705	270	401	78	265	1/2	205
6		B1J/B1JA20 / F14	1200	935	790	291	420	97	395	3/4	280
8		B1J/B1JA20 / F14	1200	935	915	291	500	97	395	3/4	355
8		B1J/B1JA25 / F16	1530	1200	990	310	523	121	505	3/4	530
10		B1J/B1JA25 / F16	1530	1200	1120	310	610	121	505	3/4	660
10		B1J/B1JA32 / F25	1830	1410	1175	348	647	153	540	1	980
12		B1J/B1JA32 / F25	1830	1410	1300	348	730	153	540	1	1160
1	M2D	B1J/B1JA8 / F07	560	560	300	225	164	43	135	3/8	25
2		B1J/B1JA10 / F10	650	490	405	233	233	51	175	3/8	45
3		B1J/B1JA10 / F10	650	490	445	233	255	51	175	3/8	70
3		B1J/B1JA12 / F12	800	620	480	253	271	65	215	1/2	95
4		B1J/B1JA12 / F12	800	620	565	253	331	65	215	1/2	120
4		B1J/B1JA16 / F14	990	760	605	270	346	78	265	1/2	165
6		B1J/B1JA20 / F14	1200	935	795	291	420	97	395	3/4	315
6		B1J/B1JA25 / F16	1530	1200	870	310	443	121	505	3/4	490
8		B1J/B1JA25 / F16	1530	1200	1005	310	523	121	505	3/4	595
10		B1J/B1JA32 / F25	1830	1410	1195	348	647	153	540	1	1050
12		B1J/B1JA32 / F25	1830	1410	1315	348	730	153	540	1	1245

TRUNNION TYPE VALVE + SPRING RETURN ACTUATOR B1J/B1JA

NPS	TYPE	ACTUATOR / MOUNTING	DIMENSIONS, mm							NPT/ISO	WEIGHT (kg)
			F	G	H	I	J	V	X		
10	M2CW/M2CZ	B1J/B1JA20 / F14	1200	935	1040	291	590	97	395	3/4	480
10		B1J/B1JA25 / F16	1530	1200	1115	310	610	121	505	3/4	650
12		B1J/B1JA25 / F16	1530	1200	1230	310	650	121	505	3/4	800
12		B1J/B1JA32 / F25	1830	1410	1285	348	690	153	540	1	1120
14		B1J/B1JA25 / F16	1530	1200	1400	310	750	121	505	3/4	990
14		B1J/B1JA32 / F25	1830	1410	1450	348	780	153	540	1	1310
16	B1J/B1JA32 / F25	1830	1410	1500	348	810	153	540	1	1520	
10	M2DW/M2DZ	B1J/B1JA25 / F16	1530	1200	1115	310	610	121	505	3/4	820
12		B1J/B1JA25 / F16	1530	1200	1245	310	650	121	505	3/4	950
12		B1J/B1JA32 / F25	1830	1410	1300	348	690	153	540	1	1270
14		B1J/B1JA32 / F25	1830	1410	1450	348	780	153	540	1	1490
16	B1J/B1JA32 / F25	1830	1410	1500	348	810	153	540	1	1820	

DIMENSIONS

MOUNTING POSITION B-HR



FOR DETAILED MANUAL GEAR SIZING, SEE BULLETIN 6 MG 21.

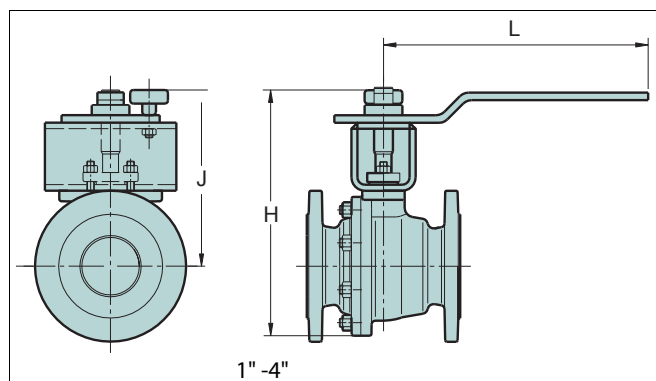
SEAT SUPPORTED VALVE + MANUAL GEAR OPERATOR SERIES M

NPS	TYPE	ACTUATOR/MOUNTING	DIMENSIONS, mm						WEIGHT [kg]
			F	G	H	J	V	ØZ	
1	M2C	M07 / F07	235	184	270	177	52	160	9
1,5		M07 / F07	235	184	305	195	52	160	13
2		M07 / F07	235	184	310	198	52	160	15
3		M07 / F07	235	184	350	220	52	160	29
4		M12 / F12	307	238	455	292	71	315	51
6		M14 / F14	385	285	570	348	86	400	120
8		M15 / F16	456	346	700	434	105	500	205
10		M16 / F25	530	387	855	527	130	600	330
12	M25 / F25	597	412	1015	615	182	600	520	
1	M2D	M07 / F07	235	184	270	177	52	160	12
1,5		M07 / F07	235	184	305	195	52	160	16
2		M07 / F07	235	184	310	198	52	160	19
3		M07 / F07	235	184	350	220	52	160	40
4		M12 / F12	307	238	455	292	71	315	70
6		M14 / F14	385	285	570	348	86	400	155
8		M15 / F16	456	346	700	434	105	500	265
10		M16 / F25	530	387	875	527	130	600	400
12	M25 / F25	597	412	1030	615	182	600	605	

TRUNNION TYPE VALVE + MANUAL GEAR OPERATOR SERIES M

NPS	TYPE	ACTUATOR/MOUNTING	DIMENSIONS, mm										WEIGHT (kg)
			A	A1	ØB	ØB1	F	G	H	J	V	ØZ	
10	M2CW/M2CZ	M15/55 / F16	533	267	405	514	456	346	815	520	105	500	335
12		M16/55 / F16	610	305	485	592	530	387	965	570	130	600	500
14		M25/75 / F25	686	343	535	665	597	412	1150	670	182	600	740
16		M25/85 / F25	762	381	595	750	597	412	1120	700	182	600	950
10	M2DW/M2DZ	M15/55 / F16	568	284	445	552	456	346	835	520	105	500	505
12		M16/55 / F16	648	324	520	626	530	387	980	570	130	600	650
14		M25/75 / F25	762	381	585	700	597	412	1160	670	182	600	920
16		M25/85 / F25	838	419	650	800	597	412	1240	700	182	600	1250

SEAT SUPPORTED VALVE + HAND LEVER LX / LK



NPS	TYPE	HAND LEVER	DIMENSIONS, mm			WEIGHT [kg]
			H	J	L	
1	M2C	LX180A	263	201	180	6
1.5		LX220A	304	227	220	10
2		LK350	300	222	350	15
3		LK350	340	244	350	30
4	LK450	430	309	450	45	
1	M2D	LX180A	263	201	140	9
1.5		LX220A	304	227	170	13
2		LK350	305	222	350	20
3		LK350	350	244	350	40
4	LK450	435	309	450	65	

HOW TO ORDER

MBV MODULAR BALL VALVE, Series M2

1.	2.	3.	4.	5.	6.	7.	8.	9.	10.
	M2	C	A	08	A	P	V	A	/

1. sign	Low noise construction
Q-	Attenuator in flow port of ball

2. sign	Valve series, face-to-face length
M2	Full bore, seat supported, f-to-f length acc. to ASME B16.10.

3. sign	Pressure rating of body and flanges
C	ASME Class 150
D	ASME Class 300

4. sign	Construction
A	Standard construction, seat supported
W	Trunnion mounted, 2-seats
Z	Trunnion mounted, 1-seat *

*) flow direction indicated by an arrow on the body

5. sign	Size
Seat supported valves	01, 1H, 02, 03, 04, 06, 08, 10, 12
Trunnion mounted valves	10, 12, 14, 16

6. sign	Materials			
	Body material	Trim and Coating material	Stem material	Bolting material/thread
A	CF8M	CF8M (& Hard Chrome, if metal seat)	AISI 329 trunnion mounted: XM-19 (NPS 10"-16")	A193 Gr. B8M
C	CG8M	CG8M (& Hard Chrome, if metal seat)	AISI 329 trunnion mounted: XM-19 (NPS 10"-16")	A193 Gr. B8M
U	CK-3MCuN	CK-3MCuN (& Ceramic coating, if metal seat)	UNS S31254	A193 Gr. B8M
S	CF8M + Cobalt based alloy sleeves in flow ports	CF8M (cobalt based coating on ball surface and flow port)	AISI 329 Only for seat supported types	A193 Gr. B8M
X	4A	4A (+ Hard Chrome, if metal seat)	AISI 329 trunnion mounted: XM-19 (NPS 10"-16")	A193 Gr. B8M

7. sign	MATERIALS			
	Seat type	Seat material	Bearing material	Back seal material
SEAT SUPPORTED				
P	locked	SS+ Cobalt based hard facing	PTFE + Graphite	PTFE
X	soft	Xtreme®	PTFE + Graphite	-
T	soft	PTFE	PTFE + Graphite	-
S	unlocked	SS+ Cobalt based hard facing	PTFE + Graphite	PTFE
E*	low Δp	SS+ Cobalt based hard facing	PTFE + Graphite	PTFE / FPM
C	locked	CK-3MCuN + Cobalt based hard facing	PTFE + Graphite	PTFE
V	locked	4A + Cobalt based hard facing	PTFE + Graphite	PTFE
M	soft	Filled PTFE	PTFE + Graphite	-
TRUNNION MOUNTED				
S	metal	SS + Cobalt based hard facing	PTFE + Graphite	Viton GF
T	soft	PTFE + C25	PTFE + Graphite	-

8. sign	Packing	Body gasket
V	PTFE V-rings, standard	PTFE
F	Graphite	Graphite
G	Live loaded graphite packing for trunnion and seat supported valves	Graphite
T	Live loaded PTFE packing for trunnion and seat supported valves	PTFE

9. sign	Model code
A	Version

10. sign	End connection style
	Standard, without sign ASME B16.5 0.06" raised face with Ra 3.2 - 6.3 mikro-meters, Ra 125 - 250 micro-inches (M2)
13	Large female ANSI B16.3
12	Large male ANSI B16.3

Subject to change without prior notice.

Metso Flow Control Inc.

Europe, Vanha Porvoontie 229, P.O. Box 304, FI-01301 VANTAA, Finland.
Tel. +358 20 483 150. Fax +358 20 483 151

North America, 44 Bowditch Drive, P.O. Box 8044, Shrewsbury, MA 01545, USA.
Tel. +1 508 852 0200. Fax +1 508 852 8172

South America, Av. Independência, 2500- Iporanga, 18087-101, Sorocaba-São Paulo, Brazil.
Tel. +55 15 2102 9700. Fax +55 15 2102 9748/49

Asia Pacific, Haw Par Centre #06-01, 180 Clemenceau Avenue, Singapore 239922.
Tel. +65 6511 1011. Fax +65 6250 0830

China, 11/F, China Youth Plaza, No.19 North Rd of East 3rd Ring Rd, Chaoyang District,
Beijing 100020, China. Tel. +86 10 6566 6600. Fax +86 10 6566 2583.

Middle East, Roundabout 8, Unit AB-07, P.O. Box 17175, Jebel Ali Freezone, Dubai,
United Arab Emirates. Tel. +971 4 883 6974. Fax +971 4 883 6836

www.metso.com/valves

