

SOLENOID VALVE FOR VALVE ACTUATION SYSTEM





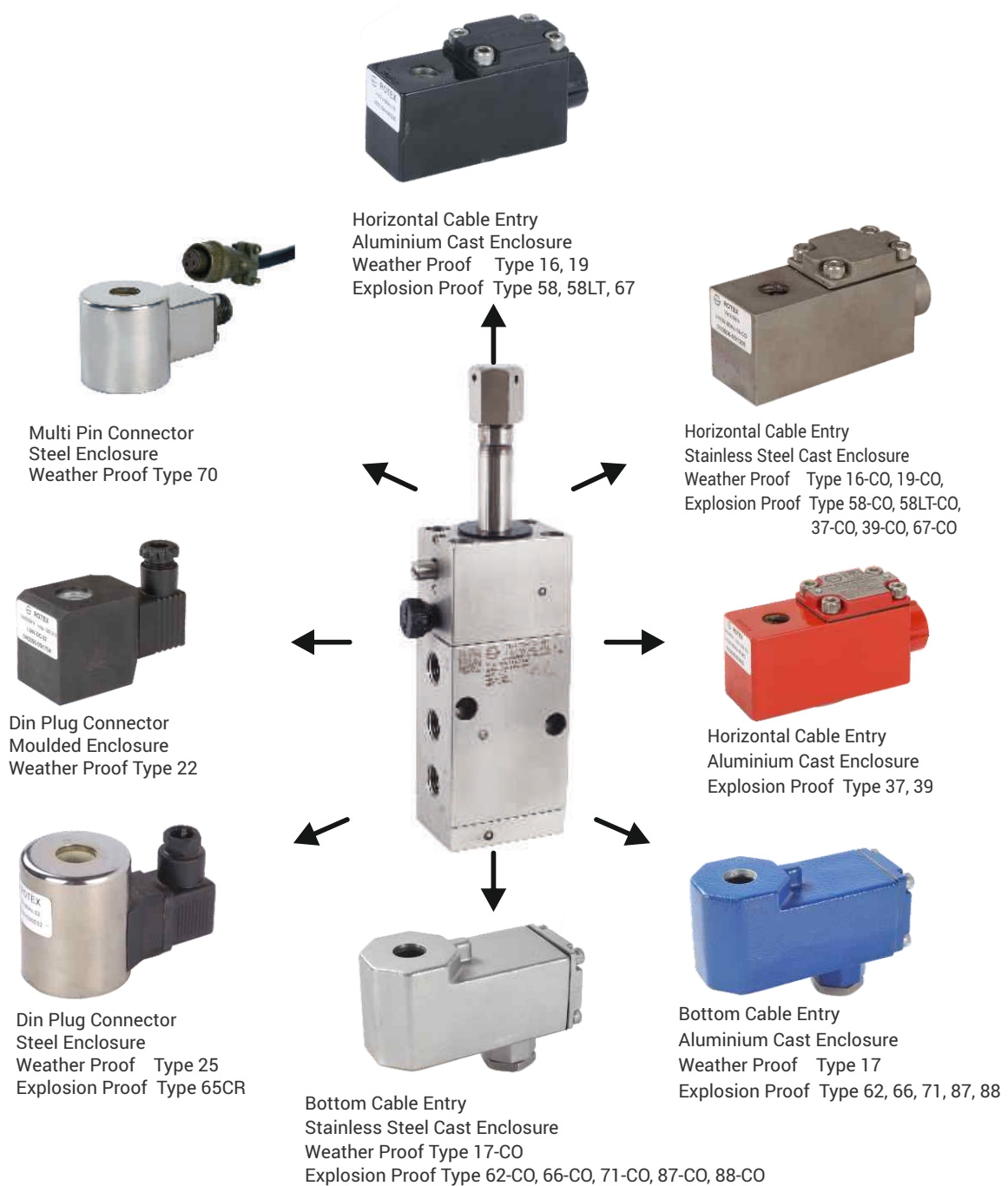
ROTEX has nearly five decades of experience in design and manufacturing of Solenoid Valves for varied applications.

100% products are tested In-house before it leaves ROTEX premises.

Over the period, ROTEX has invested in modern infrastructure to move from manual to highly automated Solenoid Valve manufacturing and testing. ROTEX ensures implementation of latest Design and testing standards in its operation.

ROTEX offers Solenoid valves with power ranging from 0.4 Watt to 140 Watt to meet most of industry demand

Interchangeable across Voltage / Current range without affecting performance of the Valve



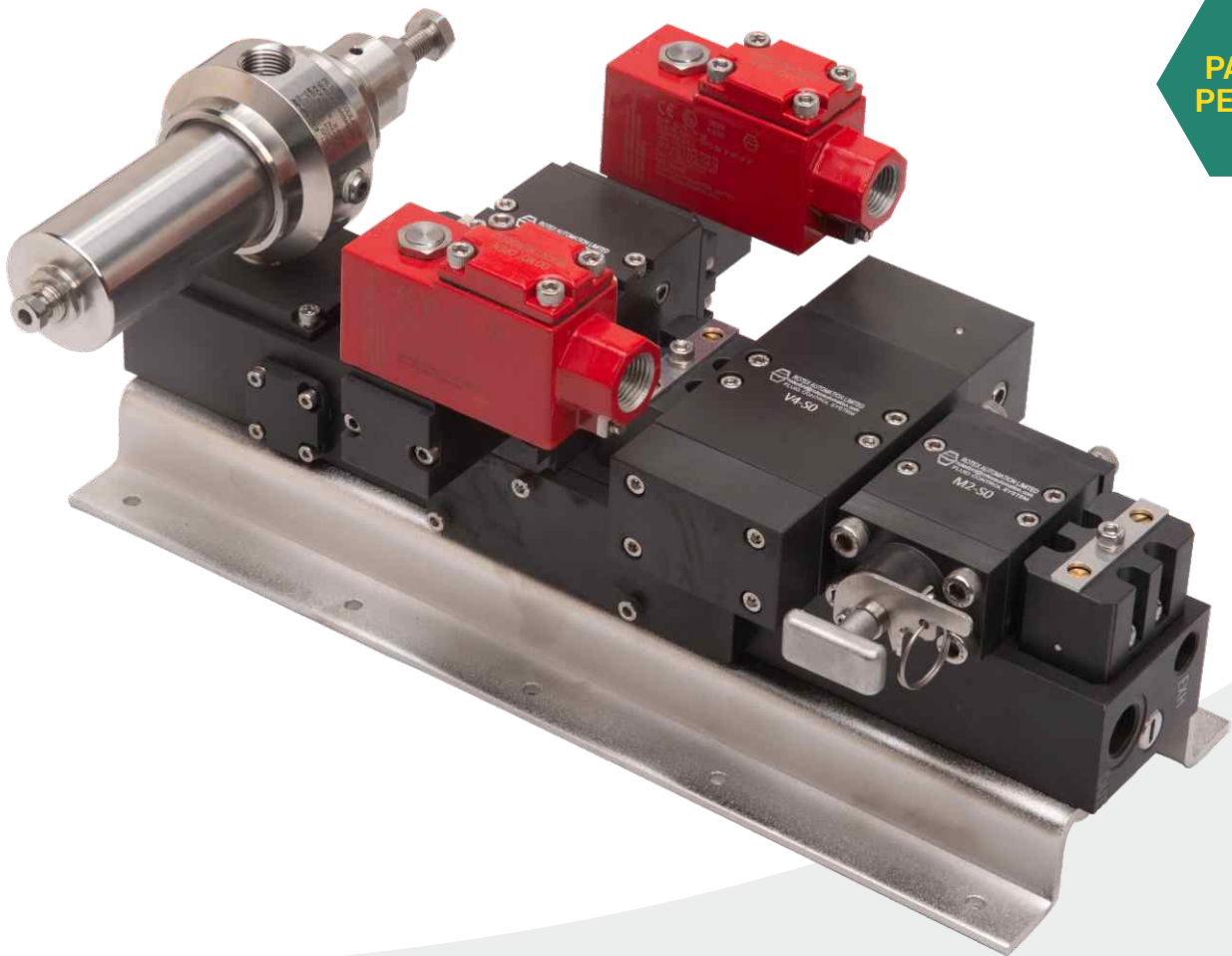
Certification



For Specific application and other variations, Contact ROTEX for exact ordering code

Specification may change without notice for product improvement

**PATENT
PENDING**



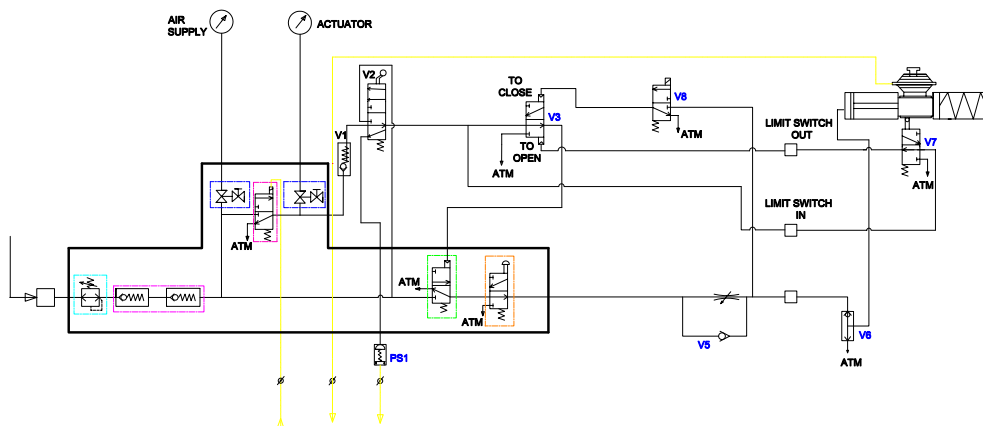
Features:

- Reduction in Down time
- Ease of maintenance
- Valve replacement without change in tubing
- Protection from Dust & Liquid
- Different valve sizes on one manifold
- Pneumatic connection all in one side

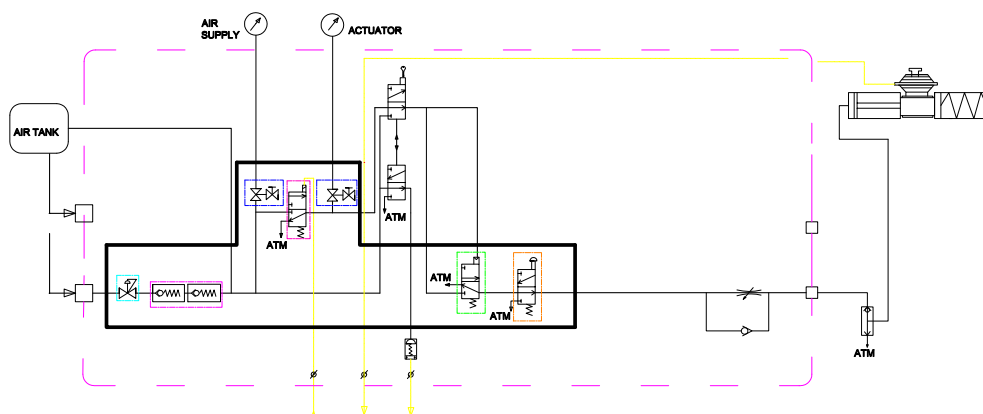
Specifications:

- NRV - Nil/ One/ Two
- AFR - Nil/ One
- Block & Bleed Module - At Inlet/ Outlet/ Pilot Valve
- Mounting - Nil/ Back plate/ Panel Box
- Solenoid Enclosure - Weather proof/ Explosion proof
Ex d/ Explosion proof Ex ia
- Valve Module 1 - 3 Port Direct Acting 1oo1/ 1oo2/ 2oo2
- Valve Module 2 - 3 Port Internal pilot operated Single Solenoid/
Air Operated/ 1oo2 Redundant/ 2oo2 Redundant
Solenoid Valve
- Orifice - 8 mm (5/16") | 15 mm (9/16")
- Connection - 1/4" | 1/2" BSP/ NPT
- Body material - Aluminium | SS316
- Seal - NBR | Viton

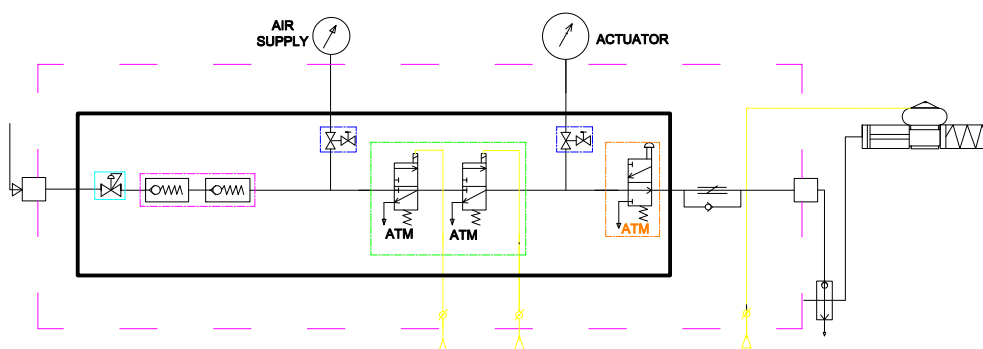
Emergency Shut Down Valve (ESDV) *



Blow Down Valve (BDV)*



Process Actuated ON/OFF Valve (UV) *



* Components in Black boundry are part of Modular Valve Block for Single Acting Actuator
For Specific application and other variations, Contact ROTEX for exact ordering code

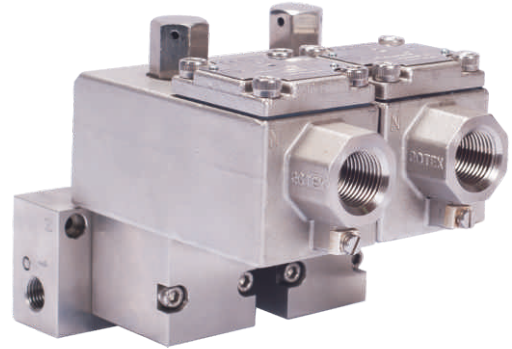
Specification may change without notice for product improvement

3 Port Redundant Solenoid Valve

- Two Direct Acting SOV's in Redundant Configuration
- Special Manifold - Maximum Flow and Ease of Maintenance
- Zero Internal Leakages
- Solenoid Power Consumption - 1.8 W / 3.5 W / 8 W / 15 W
- Orifice - 5 mm (3/16"), 10 mm (3/8")
- Operating Pressure up to 16 bar (232 psi)
- Termination - Intrinsically Safe (Ex ia) / Explosion Proof (Ex d) / Weather Proof
- MOC - Aluminium / Brass / Stainless Steel
- SIL 3 Capable as per IEC 61508:2010 Parts 1-7



Scan QR code to get more details



Redundant Valve Block - 1oo2

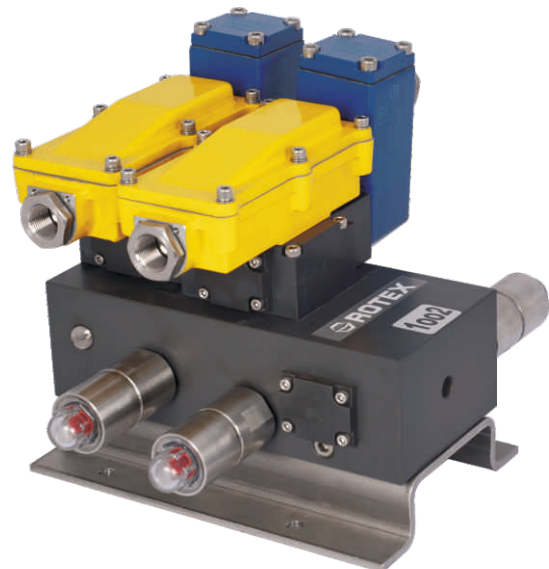
- Modular Redundant Construction
- Solenoid Valve & Actuator Status Indicator
- Termination – Weather Proof / Explosion Proof
- MOC – Aluminium / Stainless Steel
- SIL 3 Capable as per IEC 61508:2010 Parts 1-7

Reliability with **SAFETY** Instrumented

Connection & Working logic for 1oo2		
Channel - 1	Channel - 2	Output
OFF	OFF	OFF
ON	OFF	OFF
OFF	ON	OFF
ON	ON	ON



Scan QR code to get more details



For Specific application and other variations, Contact ROTEX for exact ordering code

Specification may change without notice for product improvement

Redundant Valve Block -2oo2

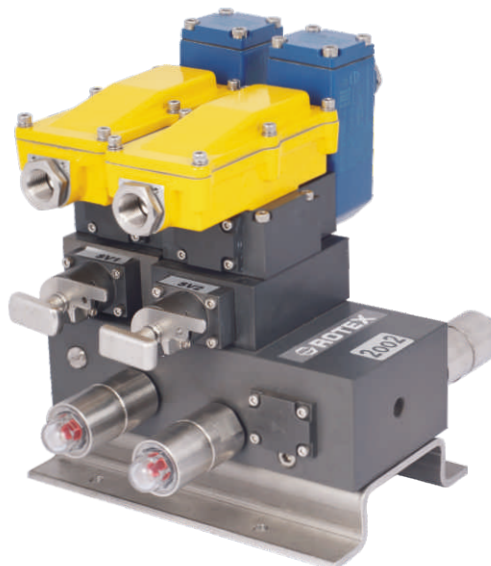
- Modular Redundant Construction
- Solenoid Valve & Actuator Status Indicator
- High PFD Value
- Online Maintenance with By-pass Arrangement
- Termination - Weather Proof / Explosion Proof
- MOC - Aluminium / Stainless Steel
- SIL 3 Capable as per IEC 61508:2010 Parts 1-7

Reliability with **AVAILABILITY** Instrumented

Connection & Working logic for 2oo2		
Channel - 1	Channel - 2	Output
OFF	OFF	OFF
OFF	ON	ON
ON	OFF	ON
ON	ON	ON



Scan QR code to get more details



Redundant Valve Block - 2oo3

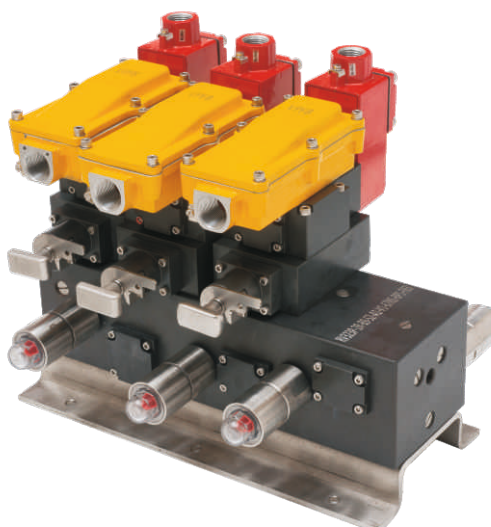
- Triple Redundant Construction
- Manifold Block Solution
- Solenoid Valve & Actuator Status Indicator
- Online Maintenance with By-pass Arrangement
- Online & Offline Diagnostics
- High PFD Value
- Termination - Weather Proof / Explosion Proof
- MOC - Aluminium / Stainless Steel
- SIL 3 Capable as per IEC 61508:2010 Parts 1-7

Reliability with **AVAILABILITY** and **SAFETY** Instrumented

Connection & Working logic for 2oo3			
Channel - 1	Channel - 2	Channel - 3	Output
OFF	OFF	OFF	OFF
ON	OFF	OFF	OFF
OFF	ON	OFF	OFF
OFF	OFF	ON	OFF
ON	ON	OFF	ON
OFF	ON	ON	ON
ON	OFF	ON	ON
ON	ON	ON	ON



scan QR code to get more details



PATENTED

For Specific application and other variations, Contact ROTEX for exact ordering code

Specification may change without notice for product improvement

POWER FAIL - RESET, AIR FAIL - STAYPUT SLIPET NAMUR SOLENOID VALVE

5 Port Internal pilot operated, SLIPET, 5/2 - 3/2 Convertible NAMUR Single Solenoid Valve

Model - 51458

Orifice - 6 mm (1/4")

Pressure - 1.5 bar (22 psi) to 10 bar (150 psi)

Connection - 1/4" BSP/ NPT

Body material - Aluminium| SS316

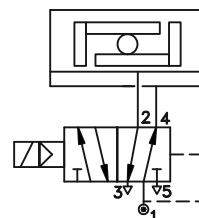
Seal - HNBR

Solenoid - DIN Plug

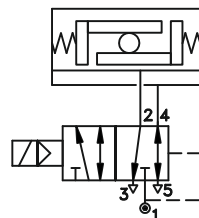
Power - AC - 8.5VA | DC - 6.5W



Scan QR code to get more details



5/2 MODE



3/2 MODE

**PATENT
PENDING**

POWER FAIL - STAYPUT, AIR FAIL - STAYPUT SLIPET NAMUR SOV

5 Port Internal pilot operated, SLIPET, 5/2 - 3/2 Convertible NAMUR Double Solenoid Valve

Model - 57458

Orifice - 6 mm (1/4")

Pressure - 1.5 bar (22 psi) to 10 bar (150 psi)

Connection - 1/4" BSP/ NPT

Body material - Aluminium| SS316

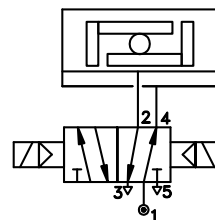
Seal - HNBR

Solenoid - DIN Plug

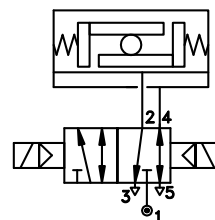
Power - AC - 8.5VA | DC - 6.5W



Scan QR code to get more details



5/2 MODE



3/2 MODE

**PATENT
PENDING**

For Specific application and other variations, Contact ROTEX for exact ordering code

Specification may change without notice for product improvement

POWER FAIL - RESET, AIR FAIL - STAYPUT SLIPET SOLENOID VALVE

5 Port Internal Pilot Operated SLIPET Single Solenoid Valve

Model - 51456

Orifice - 6 mm (1/4")

Pressure - 1.5 bar (22 psi) to 10 bar (150 psi)

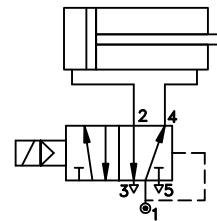
Connection - 1/4" BSP/ NPT

Body material - Aluminium| Brass| SS316

Seal - HNBR

Solenoid - DIN plug

Power - AC - 8.5VA | DC - 6.5W



**PATENT
PENDING**



Scan QR code to get
more details

POWER FAIL AND AIR FAIL TO RETAIN SLIPET SOV

5 Port Internal Pilot Operated SLIPET Double Solenoid Valve

Model - 57456

Orifice - 6 mm (1/4")

Pressure - 1.5 bar (22 psi) to 10 bar (150 psi)

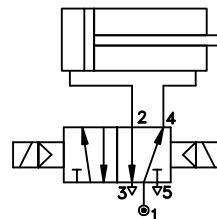
Connection - 1/4" BSP/ NPT

Body material - Aluminium| Brass| SS316

Seal - HNBR

Solenoid - DIN Plug

Power - AC - 8.5VA | DC - 6.5W



**PATENT
PENDING**



Scan QR code to get
more details

* For Low power Solenoid, Contact ROTEX

For Specific application and other variations, Contact ROTEX for exact ordering code

Specification may change without notice for product improvement

3 PORT DIRECT ACTING NC NAMUR SOLENOID VALVE

Model - 30106

Orifice - 1.8mm (1/16")

Pressure - 0 to 10 bar (150 psi)

Connection - Inlet - 1/4" BSP/ NPT,

Outlet - NAMUR

Body material - Aluminium| SS316

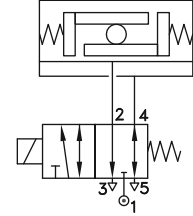
Seal - NBR| Viton| F.Silicon

Solenoid - DIN Plug| Terminal Box| Explosion proof Ex d, Ex ia

Power - AC - 6W* | DC - 8W*



scan QR code to get
more details



3 PORT NAMUR SOLENOID VALVE WITH QUICK EXHAUST

Model - 30120

Orifice - 1.8mm (1/16")

with Quick Exhaust Orifice = 5mm (3/16")

Pressure - 0 to 10 bar (150 psi)

Connection - Inlet - 1/4" BSP/ NPT,

Outlet - NAMUR

Body material - Aluminium| SS316

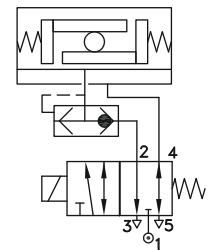
Seal - NBR| Viton| F.Silicon

Solenoid - DIN Plug| Terminal Box| Explosion proof Ex d, Ex ia

Power - AC - 6W* | DC - 8W*



scan QR code to get
more details



* For Low power Solenoid, Contact ROTEX

For Specific application and other variations, Contact ROTEX for exact ordering code

Specification may change without notice for product improvement

3 PORT DIRECT ACTING NC NAMUR SOLENOID VALVE

Standard Power Model - 30318

Low power Model - 30318L5 | 30318LA | 30318LW

Intrinsically safe Model - 30318LW

Orifice - 5 mm (3/16")

Pressure - 0 to 10 bar (150 psi)

Connection - Inlet - 1/4" BSP/ NPT,
Outlet - NAMUR

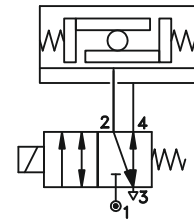
Body material - Aluminium| SS316

Seal - NBR| Viton| F.Silicon

Solenoid - Plug In| Terminal Box| Explosion proof Ex d, Ex ia

Standard Power - AC - 6W | DC - 8W

Low power - 5W | 3.5W | 1.8W



scan QR code to get
more details

3 PORT NAMUR NC SOLENOID VALVE FOR STOPPING ACTUATOR AT INTERMEDIATE POSITION

Standard Power Model - 31138 | 30138

Low Power Model - 31138LW

Intrinsically safe Solenoid - 31138IS

Orifice - 6 mm (1/4")

Pressure - 2 bar (29 psi) to 8 bar (116 psi)

Connection - Inlet - 1/4" BSP/ NPT,
Outlet - NAMUR

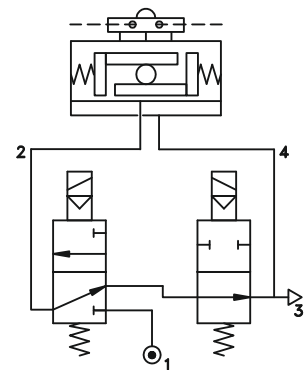
Body material - Aluminium| SS316

Seal - NBR| Viton

Solenoid - DIN Plug| Terminal Box| Explosion proof Ex d, Ex ia

Standard Power - AC - 6W | DC - 8W

Low Power - 2W



scan QR code to get
more details

For Specific application and other variations, Contact ROTEX for exact ordering code

POWER FAIL - RESET, AIR FAIL - RESET SOLENOID VALVE

5 Port Internal Pilot Operated Single Solenoid Valve

Standard Power Model - 51440

Low Power Model - P5003

Intrinsically Safe Model - I5005

Orifice - 6mm (1/4") | 12 mm (1/2") | 25 mm (1")

Pressure - Upto 16 bar (232 psi)

Connection - 1/4" | 3/8" | 1/2" | 3/4" | 1" BSP/ NPT

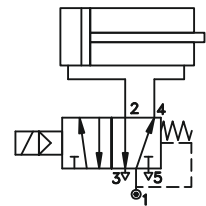
Body material - Aluminium | Brass | SS316

Seal - NBR | Viton GLT | F.Silicon

Solenoid - DIN Plug | Terminal Box | Explosion proof Ex d, Ex ia.

Standard Power - AC - 6W | DC - 8W

Low Power - 2W



Scan QR code to get
more details

POWER FAIL AND AIR FAIL TO RETAIN SOLENOID VALVE

5 Port Internal Pilot Operated Double Solenoid Valve

Standard Power Model - 57440

Low Power Model - P5006

Intrinsically Safe Model - I5006

Orifice - 6mm (1/4") | 12 mm (1/2") | 25 mm (1")

Pressure - Upto 16 bar (232 psi)

Connection - 1/4" | 3/8" | 1/2" | 3/4" | 1" BSP/ NPT

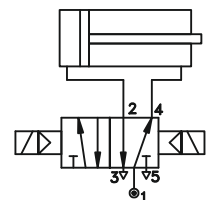
Body material - Aluminium | Brass | SS316

Seal - NBR | Viton GLT | F.Silicon

Solenoid - DIN Plug | Terminal Box | Explosion proof Ex d, Ex ia

Standard Power - AC - 6W | DC - 8W

Low Power - 2W



Scan QR code to get
more details

For Specific application and other variations, Contact ROTEX for exact ordering code

Specification may change without notice for product improvement

POWER FAIL - RESET, AIR FAIL - RESET NAMUR SOLENOID VALVE

5 Port Internal Pilot operated, 5/2 - 3/2 Convertible NAMUR Single Solenoid Valve

Standard Model - 51450

Low Power Model - 51450LW

Intrinsically Safe Model - 51450IS

Orifice - 6mm (1/4") | 12mm (1/2")

Pressure - 2 bar (29 psi) to 10 bar (150 psi)

Connection - 1/4" | 1/2" BSP/ NPT

Body material - Aluminium | SS316

Seal - NBR | Viton GLT | F.Silicon

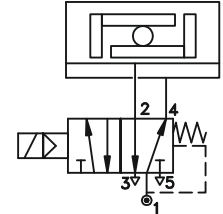
Solenoid - DIN Plug | Terminal Box | Explosion proof Ex d, Ex ia

Standard Power - AC - 6W | DC - 8W

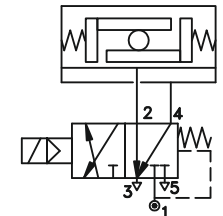
Low Power - 2W



Scan QR code to get more details



5/2 MODE



3/2 MODE

POWER FAIL - STAYPUT, AIR FAIL - STAYPUT NAMUR SOLENOID VALVE

5 Port Internal Pilot operated, 5/2 - 3/2 Convertible NAMUR Double Solenoid Valve

Standard Power Model - 57450

Low Power Model - 57450LW

Intrinsically Safe Model - 57450IS

Orifice - 6mm (1/4") | 12mm (1/2")

Pressure - 2 bar (29 psi) to 10 bar (150 psi)

Connection - 1/4" | 1/2" BSP/ NPT

Body material - Aluminium | SS316

Seal - NBR | Viton GLT | F.Silicon

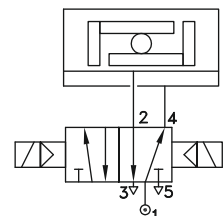
Solenoid - DIN Plug | Terminal Box | Explosion proof Ex d, Ex ia

Standard Power - AC - 6W | DC - 8W

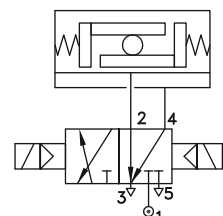
Low Power - 2W



Scan QR code to get more details



5/2 MODE



3/2 MODE

For Specific application and other variations, Contact ROTEX for exact ordering code

Specification may change without notice for product improvement

3 PORT DIRECT ACTING UNIVERSAL SOLENOID VALVE

Standard Power Model - 30308 | 30334 | 30309 | 30329

Low Power Model - P3005-R | P3005 | P3012-R | P3012 | P3017V01-R | P3017V01

Intrinsically Safe Model - P3017V01-R | P3017V01

Orifice - 5mm (3/16") | 7mm (9/32") | 10mm (3/8")

Pressure - 0 to 16 bar (232 psi)

Connection - 1/4" | 3/8" | 1/2" BSP/ NPT

Body material - Aluminium | Brass | SS316 | SS316L

Seal - NBR | Viton GLT | F.Silicon

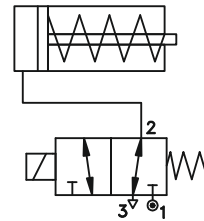
Solenoid - DIN Plug | Terminal Box | Explosion proof Ex d, Ex ia

Standard Power - AC - 20W | 8W, DC - 15W | 8W

Low Power - 5W | 3.5W | 1.8W



Scan QR code to get
more details



3 PORT INTERNAL / EXTERNAL PILOT OPERATED SOLENOID VALVE

Standard Model Power - Internal Pilot Operated - NC - 31119 | 31120 | 31121

Standard Model Power - Internal Pilot Operated - NO - 31209 | 31210 | 31206

Standard Model Power - External Pilot Operated - NC | NO - 32301

Low Power Model - NC - P3001 | NO - P3003 | External Pilot - P3006

Intrinsically Safe Model - NC - I3003 | NO - I3005 | External Pilot - I3004

Orifice - 7mm (9/32") | 10mm (3/8") | 16mm (5/8") | 25mm (1")

Pressure - 2 bar (29 psi) to 40 bar (580 psi)

Connection - 1/4" | 3/8" | 1/2" | 3/4" | 1" BSP/ NPT

Body material - Aluminium | Brass | SS316

Seal - NBR | Viton GLT | F.Silicon

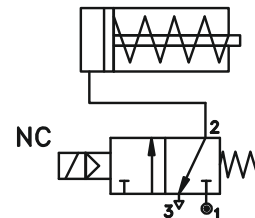
Solenoid - DIN Plug | Terminal Box | Explosion proof Ex d, Ex ia

Standard Power - AC - 13W | 6W, DC - 13W | 8W

Low Power - 2W

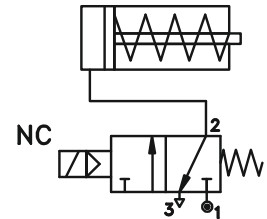


Scan QR code to get
more details



3 PORT HIGH ORIFICE SOLENOID VALVE

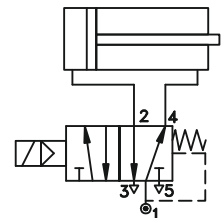
Model - Internal Pilot Operated - NC - 31155 | 31153
 Model - Internal Pilot Operated - NO - 31255 | 31253
 Model - External Pilot Operated - NC / NO - 32155 | 32153
 Orifice - 40mm (1 9/16") | 50mm (2")
 Pressure - 2 bar (29 psi) to 10 bar (150 psi)
 Connection - 1 1/2" | 2" BSP/ NPT
 Body material - Aluminium Cast| SS316 Cast
 Seal - NBR| Viton
 Solenoid - DIN Plug | Terminal Box | Explosion proof Ex d, Ex ia
 POWER - AC - 20W | 8W, DC - 15W | 8W



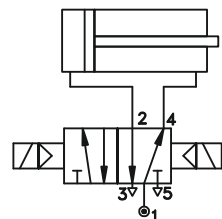
Scan QR code to get
more details

5 PORT HIGH ORIFICE SOLENOID VALVE

Model - Single Solenoid 51440
 Model - Double Solenoid 57440
 Orifice - 40mm (1 9/16") | 50mm (2")
 Pressure - 2 bar (29 psi) to 10 bar (150 psi)
 Connection - 1 1/2" | 2" BSP/ NPT
 Body material - SS316
 Seal - NBR| Viton
 Solenoid - DIN Plug| Terminal Box| Explosion proof Ex d, Ex ia
 Power - AC - 8W | DC - 8W



Monostable



Bi-stable



Scan QR code to get
more details

For Specific application and other variations, Contact ROTEX for exact ordering code

Specification may change without notice for product improvement

POWER FAIL - RESET, AIR FAIL - RESET SOLENOID VALVE

5 Port Internal / External Pilot Operated Single Solenoid Valve

Internal Pilot Operated - 51400 | 51434

External Pilot Operated - 52400

Low Power Model - P5001

Intrinsically Safe Model - I5001

Orifice - 6mm (1/4") | 10mm (3/8") | 16mm (5/8") | 20mm (3/4") | 25mm (1")

Pressure - 2 bar (29 psi) to 10 bar (150 psi)

Connection - 1/4" | 3/8" | 1/2" | 3/4" | 1" BSP/ NPT

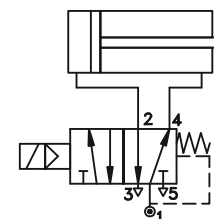
Body material - Aluminium | Brass | SS316

Seal - NBR | Viton

Solenoid - DIN Plug | Terminal Box | Explosion proof Ex d, Ex ia

Standard Power - AC - 6W | DC - 8W

Low Power - 2W



Scan QR code to get
more details

SOLENOID VALVE FOR ACTUATOR

5 Port Internal Pilot operated, 5/2 - 3/2 Convertible NAMUR Single Solenoid Valve

Standard Power Model - 51424

Low Power Model - 51424LW

Intrinsically Safe Model - 51424IS

Orifice - 6 mm (1/4")

Pressure - 2 bar (29 psi) to 10 bar (150 psi)

Connection - 1/4" BSP/ NPT

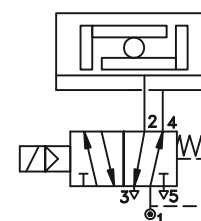
Body material - Aluminium | SS316

Seal - NBR | Viton

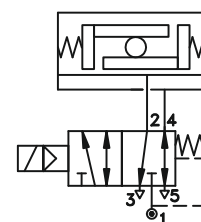
Solenoid - DIN Plug | Terminal Box | Explosion proof Ex d, Ex ia

Standard Power - AC - 6W | DC - 8W

Low Power - 2W



5/2 MODE



3/2 MODE



Scan QR code to get
more details

For Specific application and other variations, Contact ROTEX for exact ordering code

Specification may change without notice for product improvement

5/3 CENTER OFF SOLENOID VALVE

5 Port Internal Pilot Operated CENTER OFF Solenoid Valve

Standard Power Model - 51408 | 51412

Low Power Model - P5013

Orifice - 6mm (1/4") | 10mm (3/8") | 16mm (5/8") | 20mm (3/4") | 25mm (1")

Pressure - 2 bar (29 psi) to 10 bar (150 psi)

Connection - 1/4" | 3/8" | 1/2" | 3/4" | 1" BSP/ NPT

Body material - Aluminium | Brass | SS316

Seal - NBR | Viton

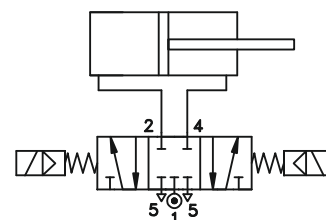
Solenoid - DIN Plug | Terminal Box | Explosion proof Ex d, Ex ia

Standard Power - AC - 6W | DC - 8W

Low Power - 2W



Scan QR code to get more details



5/3 CENTER EXHAUST SOLENOID VALVE

5 Port Internal Pilot Operated CENTER EXHAUST Solenoid Valve

Model - 51416

Orifice - 6mm (1/4") | 10mm (3/8") | 16mm (5/8") | 20mm (3/4") | 25mm (1")

Pressure - 2 bar (29 psi) to 10 bar (150 psi)

Connection - 1/4" | 3/8" | 1/2" | 3/4" | 1" BSP/ NPT

Body material - Aluminium | Brass | SS316

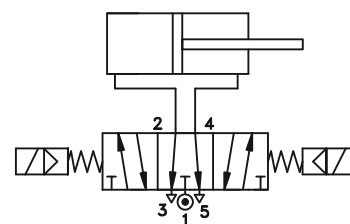
Seal - NBR | Viton

Solenoid - DIN Plug | Terminal Box | Explosion proof Ex d, Ex ia

Power - AC - 6W | DC - 8W



Scan QR code to get more details



For Specific application and other variations, Contact ROTEX for exact ordering code

5/3 CENTER PRESSURISED SOLENOID VALVE

5 Port Internal Pilot Operated CENTER PRESSURISED Solenoid Valve

Model - 51420 | 51421

Orifice - 6mm (1/4") | 10mm (3/8") | 16mm (5/8") | 20mm (3/4") | 25mm (1")

Pressure - 2 bar (29 psi) to 10 bar (150 psi)

Connection - 1/4" | 3/8" | 1/2" | 3/4" | 1" BSP/ NPT

Body material - Aluminium | Brass | SS316

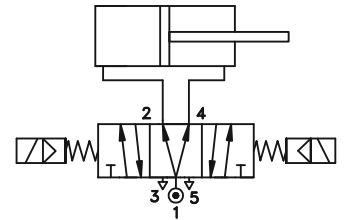
Seal - NBR | Viton

Solenoid - DIN Plug | Terminal Box | Explosion proof Ex d, Ex ia

Power - AC - 6W* | DC - 8W*



Scan QR code to get
more details



AIR OPERATED VALVE

3 PORT AIR OPERATED VALVE

Model - 33101 | 33355 | 33353

Orifice - 7mm (9/32") | 10mm (3/8") | 16mm (5/8") | 25mm (1") | 40mm (1 9/16") | 50mm (2")

Pressure - 0 to 20 bar (290 psi)

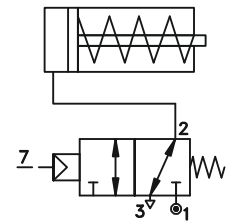
Connection - 1/4" | 3/8" | 1/2" | 3/4" | 1" | 1 1/2" | 2" BSP/ NPT

Body material - Aluminium | SS316

Seal - NBR | Viton GLT | F.Silicon



Scan QR code to get
more details



For Specific application and other variations, Contact ROTEX for exact ordering code

Specification may change without notice for product improvement

5 PORT AIR OPERATED MONOSTABLE VALVE

5 Port Air Operated Monostable Valve

Model - 53440

Orifice - 6mm (1/4") | 12mm (1/2") | 25mm (1") | 40mm (1 9/16")

Pressure - Upto 16 bar (232 psi)

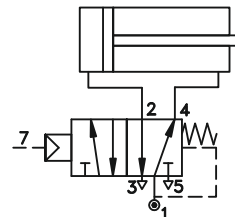
Connection - 1/4" | 3/8" | 1/2" | 3/4" | 1" | 1 1/2" BSP/ NPT

Body material - Aluminium| SS316

Seal - NBR | Viton GLT | F.Silicon



Scan QR code to get more details



5 PORT AIR OPERATED BI-STABLE VALVE

5 Port Air Operated Bi-Stable Valve

Model - 58440

Orifice - 6mm (1/4") | 12mm (1/2") | 25mm (1") | 40mm (1 9/16")

Pressure - Upto 16 bar (232 psi)

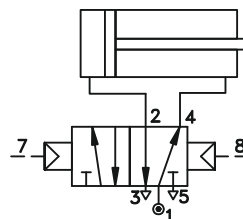
Connection - 1/4" | 3/8" | 1/2" | 3/4" | 1" | 1 1/2" BSP/ NPT

Body material - Aluminium| SS316

Seal - NBR| Viton GLT| F.Silicon



Scan QR code to get more details



* For Low power Solenoid, Contact ROTEX

For Specific application and other variations, Contact ROTEX for exact ordering code

Specification may change without notice for product improvement

5 PORT INTERNAL PILOT OPERATED SUB BASE SOLENOID VALVE

Monostable - 51445

Bi-stable - 57445

Orifice - 6 mm (1/4")

Pressure - 2 bar (29 psi) to 10 bar (150 psi)

Connection - Sub base

Body material - Aluminium | SS316

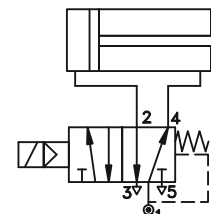
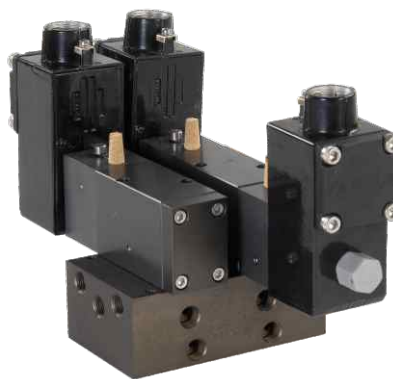
Seal - NBR| Viton GLT

Solenoid - DIN Plug| Terminal Box| Explosion proof Ex d

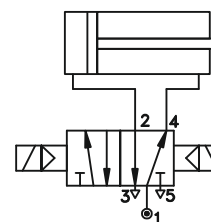
Power - AC - 6W*| DC - 8W*



Scan QR code to get
more details



Monostable



Bi-stable

3 PORT DIRECT ACTING SUB BASE SOLENOID VALVE

Model - NC - 30111 | 30112

Model - NO - 30211 | 30212

Orifice - 3mm (1/8") | 2.5mm (3/32") | 2.2mm (3/32") | 1.8mm
(1/16") | 1.2 mm (3/64")

Pressure - Upto 63 bar (914 psi)

Connection - Sub base

Body material - Aluminium | SS316

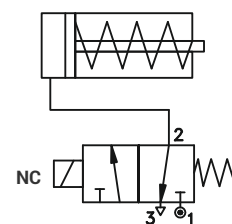
Seal - NBR| Viton

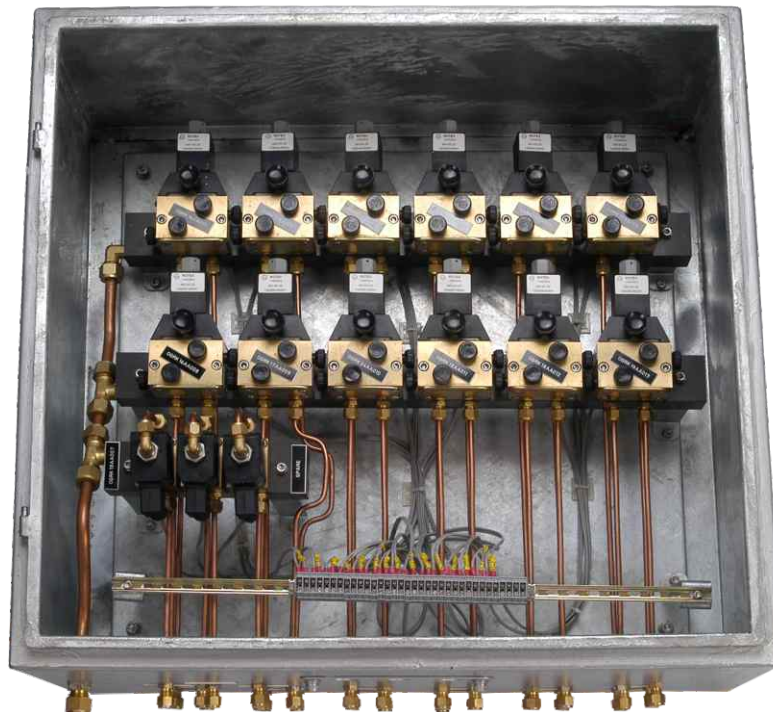
Solenoid - DIN Plug| Terminal Box| Explosion proof Ex d

Power - AC - 13W | 6W, DC -13W | 8W



Scan QR code to get
more details





For Specific application and other variations, Contact ROTEX for exact ordering code

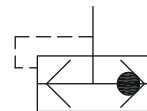
Specification may change without notice for product improvement

QUICK EXHAUST VALVE

Model - 241QE
Orifice - 12 mm (1/2 ")
Pressure - 0 to 10 bar (150 psi)
Connection - 1/2" BSP / NPT
Body Material - SS304 Cast | SS316 Cast



Scan QR code to get more details



AIR FILTER REGULATOR

Model - AFR
Pressure - Up to 30 bar (254 psi)
Size - 5 | 25 | 40 microns
Connection - 3/8" | 1/2" | 3/4" | 1" BSP / NPT
Body Material - Plastic | Stainless Steel

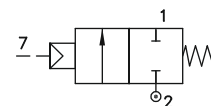


AIR LOCK VALVE

Model - NC - 23102
Orifice - 12mm (1/2") | 20 (3/4") | 25mm (1") | 40mm (1 9/16") | 50mm (2")
Pressure - 2 bar (29 psi) to 20 bar (290 psi)
Connection - 1/2" | 3/4" | 1" | 1 1/4" | 1 1/2" | 2" BSP/ NPT
Body material - Aluminium Cast
Seal - NBR| Viton



Scan QR code to get more details

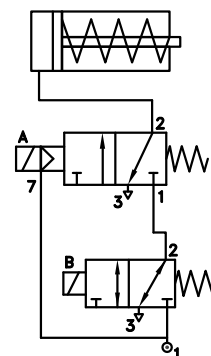


3 PORT SOLENOID VALVE WITH SLOW CLOSING & SLOW OPENING & FAST CLOSING IN ESD

Model - VB123
Orifice Model A - 12mm (1/2") | 25mm (1")
Orifice Model B - 5mm (3/16") | 10mm (3/8")
Pressure - 2 bar (29 bar) to 10 bar (150 psi)
Inlet Connection - 1/4" | 1/2" BSP/ NPT
Outlet & Exhaust Connection - 1/2" | 1" BSP/ NPT
Body Material - Aluminium | SS316
Seal - NBR | F. Silicon
Solenoid - DIN Plug| Terminal Box| Explosion proof Ex d, Ex ia
AC – 6W | 8W
DC – 8W



Scan QR code to get more details



For Specific application and other variations, Contact ROTEX for exact ordering code

	A3	Silencer Sintered Bronze	VALVE
	A4	Silencer Sintered SS	
	A6	NRV Dust Cap Nylon, ideally suited for preventing external Enironmental Media/Water/Liquid entering in the valve. Supplied only for 1/4" BSP/NPT (Ambient Temperature - 20 °C to 80 °C)	
	A9	Dust Cap SS316	
	SP2	Namur Plate assembly with NBR/Viton Seal	SOLENOID
	B1	Weather Proof Cable Gland M20X1.5(M) Brass	
	B5	ATEX Approved Cable Gland (Plastic) M20X1.5(M) (Ambient Temperature- 20 °C to 80 °C)	
	B6	ATEX Approved Cable Gland (BRASS) M20X1.5(M) (Ambient Temperature- 20 °C to 80 °C)	
	B7	ATEX Approved Cable Gland (SS316) M20X1.5(M) (Ambient Temperature- 20 °C to 80 °C)	
	B8	Weather Proof Cable gland M20X1.5(M) (Plastic)	
	B3	Explosion Proof Double Compression Cable Gland (BRASS) 1/2" NPT(M) (Ambient Temperature - 20 °C to 80 °C), CCOE/PESO Certified	
	B4	Explosion Proof Double Compression Cable Gland (SS316) 1/2" NPT(M) (Ambient Temperature - 20 °C to 80 °C), CCOE/PESO Certified	

For Specific application and other variations, Contact ROTEX for exact ordering code

Specification may change without notice for product improvement